



JORDAN FISHWICK
EXCLUSIVE

| 18 Barrow Lane | Hale





£13,500 PCM

Features

- Detached
- Five Bedrooms
- Very Private and Secure
- EPC Rating C
- Gated
- Four Bathrooms
- Council Tax Band H

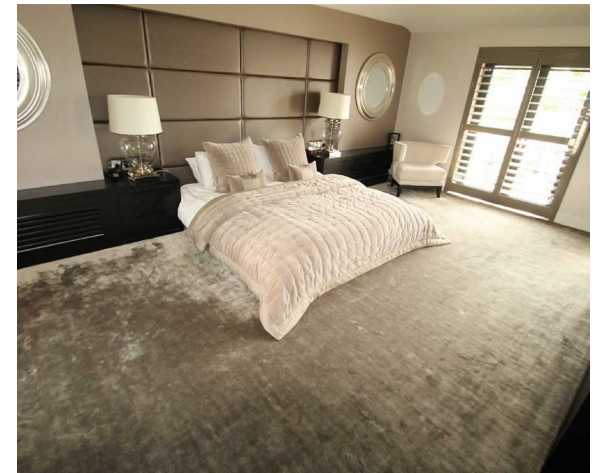


Barrow Lane, Hale - A beautifully crafted and remodelled 5 bedroom detached residence. Stunning interior design and striking décor throughout with great attention to detail. Large windows enjoy a pleasant outlook with gardens to all sides. The gated driveway provides access to the double garage and the property is afforded a high degree of privacy. The accommodation consists of three large reception areas, five bedrooms, three en suites and a family bathroom. Covered terraces also surround the property providing lovely outside entertaining areas. All in all it's a must see!! Available now, furnishings negotiable. Call the Hale office to arrange viewings 0161 929 9898 option 2.



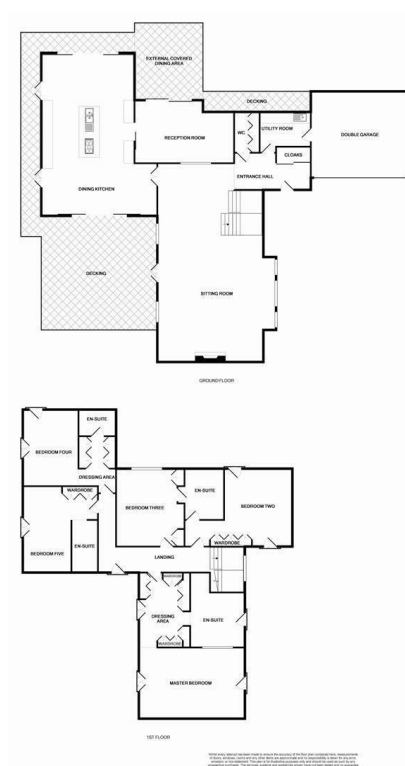
General information

- Tax Band: H
- Sqft: 3648.00 sq ft
- Plot: acre(s)
- Bedrooms: 5
- Bathrooms: 4
- Postcode: WA15 0DN

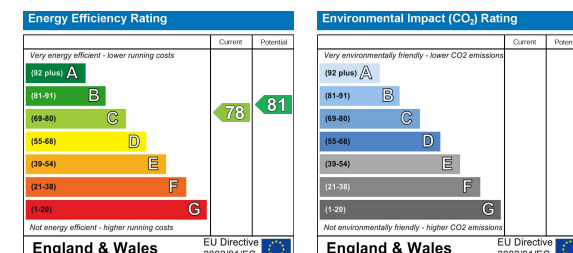








IMPORTANT: we would like to inform prospective purchasers that these sales particulars have been prepared as a general guide only. A detailed survey has not been carried out, nor the services, appliances and fittings tested. Room sizes should not be relied upon for furnishing purposes and are approximate. If floor plans are included, they are for guidance only and illustration purposes only and may not be to scale. If there are any important matters likely to affect your decision to buy, please contact us before viewing the property.



JORDAN FISHWICK
EXCLUSIVE

Jordan Fishwick
172 Ashley Road, Hale, Cheshire, WA15 9F
01619291994
halemanagement@jordanfishwick.co.uk
www.jfexclusive.co.uk